

# K26 TYPE -40°C +85°C 12000H

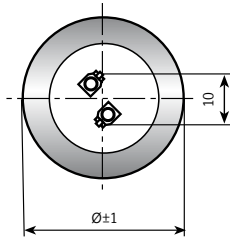
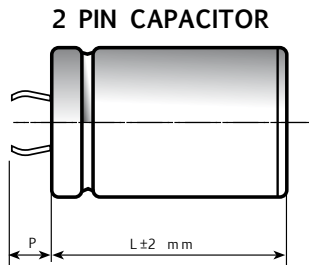
RoHS Compliant

- Surge-proof capacitor in aluminium can with insulation sleeve
- Snap in terminals for PCB mounting.
- Design optimized for high ripple current applications

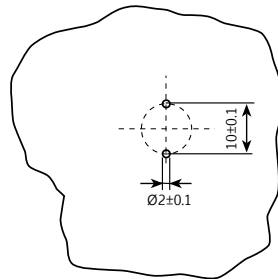
## APPLICATIONS

Designed for professional application. Ultra compact UPS, Solar inverters, High ripple current converters, Motor drives.

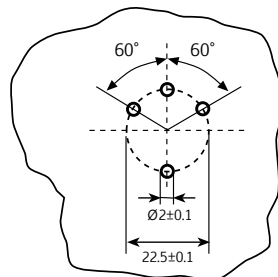
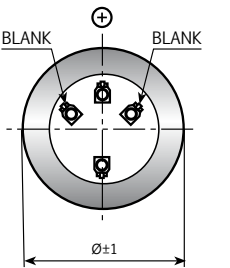
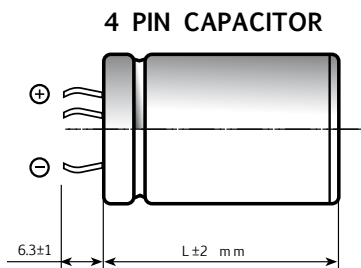
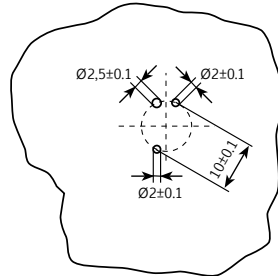
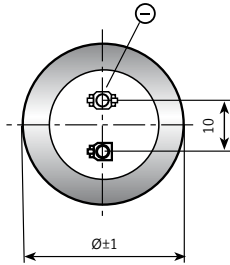
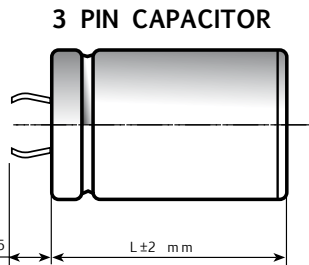
Dimensions in mm.



Circuit board hole dimensions



PIN LENGTH  
P 4.5 short pin  
P 6.3 long pin (standard)



Ø	22	25	30	35	40	45	50
2 PINS	●	●	●	●	●		
3 PINS		●	●	●			
4 PINS				●	●	●	●

On demand, only for capacitors with diam ≥ 35mm: octagonal can shape for long stress vibration applications.

## SPECIFICATIONS

<b>Temperature Range</b>	Operating: -40°C +85°C Storage : Preferably below +25°C, not exceeding +40°C	[Environmental classification 40/85/56 IEC-68]
<b>Rated Voltage Range (V<sub>r</sub>)</b>	from 400V to 450V DC	
<b>Surge Voltage (V<sub>p</sub>)</b>	V <sub>p</sub> = 1.10 V <sub>r</sub>	
<b>Rated Capacitance Range</b>	from 1000 µF to 2700 µF	
<b>Capacitance Tolerance</b>	±20% at 100 Hz, 20°C [M class IEC-62] on request: -10% +30% at 100 Hz, 20°C [Q class IEC-62]	
<b>Leakage Current (I<sub>L</sub>) (mA, 5 min, 20°C)</b>	max I <sub>L</sub> = 0.006 C <sub>r</sub> V <sub>r</sub> + 4 µA At 85°C max I <sub>L</sub> = 0.04 C <sub>r</sub> V <sub>r</sub> µA	Kendeil product limit: I <sub>L</sub> = 0.003 C <sub>r</sub> V <sub>r</sub>
<b>Ripple current (I<sub>r</sub>)</b>	Refer to table at 85°C and 100Hz:	
	FREQUENCY	50Hz    100Hz    500 Hz    1000Hz    >10kHz
	MULTIPLIER	0.88    1.0    1.45    1.50    1.55
	AMBIENT TEMP.	35°C    45°C    55°C    65°C    75°C    85°C    95°C
	MULTIPLIER	2.2    2.1    1.8    1.6    1.4    1.0    0.5
	Maximum internal temperature	98°C
<b>Insulation Resistance</b>	At 100V DC for 1 min is >100 MΩ across insulating sleeve and terminals.	
<b>Vibration Resistance</b>	Frequency range: 10 Hz to 500 Hz, amplitude 0.75 mm max acceleration 10g for 3x2 h	
<b>Life test</b>	After 2,000 hours application of rated voltage at 85°C capacitors meet characteristics aside	Cap change ≤ 10% tan δ ≤ 130% Leakage current (I <sub>L</sub> ) < initial limit Impedance (Z) ≤ 200%
<b>Shelf life</b>	After leaving capacitors under no load for 500 hours at 85°C, when restored at 20°C meet specifications aside	Cap change ≤ ±15% tan δ ≤ 150% Leakage current (I <sub>L</sub> ) < initial limit
<b>Useful life (V<sub>n</sub>, Temp rated I ripple applied)</b>	> 200000 h at 40°C > 12000 h at 85°C	
<b>Failure percentage Failure rate</b>	≤ 1% (during useful life) ≤ 33 fit (33 10 <sup>-9</sup> /h)	
<b>Self inductance</b>	Approx. 20 nH	
<b>Reference standards</b>	CECC 30.300 - IEC 60384-4 LONG LIFE GRADE	

## K26 TYPE STANDARD RATINGS

Cap $\mu\text{F}$	$\varnothing \times L$ mm	Tan $\delta$ MAX 100 Hz 20°C	ESR TYP m $\Omega$ 100 Hz 20°C	Z TYP m $\Omega$ 10 kHz 20°C	Ir a.c. A max 100 Hz 85°C	PART NUMBER termination digit excluded
1000	40x60	0.12	99	74	5.1	K26400102_PM0F060
1200	40x77	0.12	94	64	5.2	K26400122_PM0F077
1500	45x60	0.12	84	61	5.4	K26400152_PM0N060
1800	45x77	0.12	70	51	6.2	K26400182_PM0N077
1800	50x60	0.10	70	51	6.5	K26400182_PM0V060
2000	40x105	0.12	61	44	7.6	K26400202_PM0F105
2200	45x105	0.13	47	40	7.8	K26400222_PM0N105
2200	50x77	0.10	47	40	7.6	K26400222_PM0V077
2700	45x105	0.13	46	39	9.2	K26400272_PM0N105
3300	50x105	0.10	37	30	10.2	K26400332_PM0V105

**RATED  
VOLTAGE  
VDC**

**400V**

Cap $\mu\text{F}$	$\varnothing \times L$ mm	Tan $\delta$ MAX 100 Hz 20°C	ESR TYP m $\Omega$ 100 Hz 20°C	Z TYP m $\Omega$ 10 kHz 20°C	Ir a.c. A max 100 Hz 85°C	PART NUMBER termination digit excluded
1000	40x60	0.11	99	74	5.1	K26420102_PM0F060
1200	40x77	0.11	94	64	5.2	K26420122_PM0F077
1200	45x60	0.11	94	64	5.2	K26420122_PM0N060
1500	40x105	0.12	75	55	6.3	K26420152_PM0F105
1500	45x77	0.12	75	55	5.6	K26420152_PM0N077
1500	50x60	0.10	75	55	5.7	K26420152_PM0V060
1800	50x77	0.10	67	50	6.9	K26420182_PM0V077
2200	45x105	0.13	47	40	7.8	K26420222_PM0N105
2700	50x105	0.10	37	30	9.5	K26420272_PM0V105

**RATED  
VOLTAGE  
VDC**

**420V**

Cap $\mu\text{F}$	$\varnothing \times L$ mm	Tan $\delta$ MAX 100 Hz 20°C	ESR TYP m $\Omega$ 100 Hz 20°C	Z TYP m $\Omega$ 10 kHz 20°C	Ir a.c. A max 100 Hz 85°C	PART NUMBER termination digit excluded
1000	40x60	0.11	99	74	5.1	K26450102_PM0F060
1200	40x77	0.11	94	64	5.2	K26450122_PM0F077
1200	45x60	0.11	94	64	5.2	K26450122_PM0N060
1500	40x105	0.12	75	55	6.3	K26450152_PM0F105
1500	45x77	0.12	75	55	5.6	K26450152_PM0N077
1500	50x60	0.10	75	55	5.7	K26450152_PM0V060
1800	50x77	0.10	67	50	6.9	K26450182_PM0V077
2200	45x105	0.13	47	40	7.8	K26450222_PM0N105
2700	50x105	0.10	37	30	9.5	K26450272_PM0V105

**RATED  
VOLTAGE  
VDC**

**450V**

PLEASE TO CONTACT OUR TECHNICAL SERVICE FOR MORE INFORMATION OR SPEC-IN ANALYSIS.